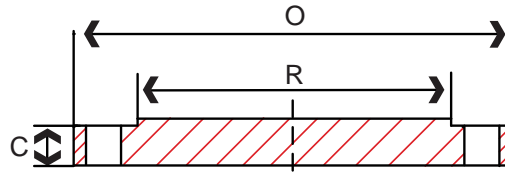


Class 300 Stainless Steel Blind Flange



Stainless Steel Blind Flange

Class 300 Stainless Steel Blind Flange Dimensions

Nominal Size	Common Dimensions				Bore			Length Thru Hub		
	Outside Diameter (D)	Thickness (C)	Raised Face Diameter (R)	Fillet Radius (r)	Weld Neck Socket (b ₁)	Slip-on (b ₂)	Lap Joint (b ₃)	Weld Neck (Y ₁)	Slip-on Socket (Y ₂)	Lap Joint (Y ₃)
1/2	3.75	0.56	1.38	0.12		0.88	0.90	2.06	0.88	0.88
3/4	4.62	0.62	1.69	0.12	To be specified by purchaser.	1.09	1.11	2.25	1.00	1.00
1	4.88	0.69	2.00	0.12		1.36	1.38	2.44	1.06	1.06
1-1/4	5.25	0.75	2.50	0.19		1.70	1.72	2.56	1.06	1.06
1-1/2	6.12	0.81	2.88	0.25		1.95	1.97	2.69	1.19	1.19
2	6.50	0.88	3.62	0.31		2.44	2.46	2.75	1.31	1.31
2-1/2	7.50	1.00	4.12	0.31		2.94	2.97	3.00	1.50	1.50
3	8.25	1.12	5.00	0.38		3.57	3.60	3.12	1.69	1.69
3-1/2	9.00	1.19	5.50	0.38		4.07	4.10	3.19	1.75	1.75
4	10.00	1.25	6.19	0.44		4.60	4.60	3.38	1.88	1.88
5	11.00	1.38	7.31	0.44		5.66	5.69	3.88	2.00	2.00
6	12.50	1.44	8.50	0.50		6.72	6.75	3.88	2.06	2.06
8	15.00	1.62	10.62	0.50		8.72	8.75	4.38	2.44	2.44
10	17.50	1.88	12.75	0.50		10.88	10.92	4.62	2.62	3.75
12	20.50	2.00	15.00	0.50		12.88	12.92	5.12	2.88	4.00
14	23.00	2.12	16.25	0.50		14.14	14.18	5.62	3.00	4.38
16	25.50	2.25	18.50	0.50		16.16	16.19	5.75	3.25	4.75
18	28.00	2.38	21.00	0.50	18.18	18.20	6.25	3.50	5.12	
20	30.50	2.50	23.00	0.50	20.20	20.25	6.38	3.75	5.50	
24	36.00	2.75	27.25	0.50	24.25	24.25	6.62	4.19	6.00	

Note: OEM services are available as per customer's request