

# **Marine & Oil Platform**

## **Pressure Water Tank**



**Chongqing Hi-sea Marine Equipment Import & Export Co., Ltd**

**Tel: +86-23-67868283**

**Fax: +86-23-67956622**



## Contents

1. About Us.....	3
2. DRG Series Electrical Heating Hot Water Tank (Calorifier).....	4
3. YLG Series Pressure Water Tank (Hydrophore).....	6
4. ZDR Series Steam-electrical Heating Hot Water Tank.....	8
5. ZRG Series Steam Heating Hot Water Tank.....	10
6. ZYG Series Combination Pressure Water Tank.....	12
7. Contact us.....	15

**Caution: The instruction book is only for your reference; please take the material object as standard, our company retains the final right to explain!**

**This product is China patent item, which is provided with independent intellectual property rights.**

## **1. About us**

### **Company Information:**

Chongqing Hi-Sea Marine Equipment Import & Export Co., Ltd., is located in Chongqing, one of the largest industrial cities in China. We are in the marine field and offshore field more than 13years. We specialize in marine products -- ---marine deck equipment, marine mooring equipment, marine cable, marine light fittings, marine lifesaving equipment, marine castings and forgings, marine pipe and pipe fittings, pumps and valves and other marine products. Also we can provide the project solutions, including design, manufacture and export large, medium and small ship according to the requirement.

### **Actuality Introduction:**

Superior quality, efficiency and professional service is our business principles, we stick to ISO9001-2000 and rules of International Society Classifications. Quality control program ensure to meet client's requirement strictly. We can provide ABS, LR, BV, GL, DNV, KR, NK, RINA, CCS certificate for our marine products.

Know-how sales team make sure your enquiries to be dealt with in good manner in time, support your business & project comprehensively and bring you the cost-effective business.

We have two stock factories and more than 20 long-term cooperation factories. Europe, North America, South Asia, Middle East and Africa are our leading markets, shipyard, Storage Company, trader and distributor are our main clients, and our annual turnover is up to USD10 million in 2009.

Our products have been exported directly to the following shipyards. Some products were exported to those big shipyards through the middle local company:

**KARACHI SHIPYARD AND ENGINEERING WORKS LTD**

**SECON**

**KEPPEL BATANGAS SHIPYARD**

**CCC Group**

### **Commitment and Hope:**

We adhere to the enterprises spirit of "Integrity, Credit, Win-Win and Nonstop Improvement"; we are expecting to your visit and negotiation business, we will be your reliable partner in China.

## 2. DRG Series Electrical Heating Hot Water Tank (Calorifier)



### 2.1 Application

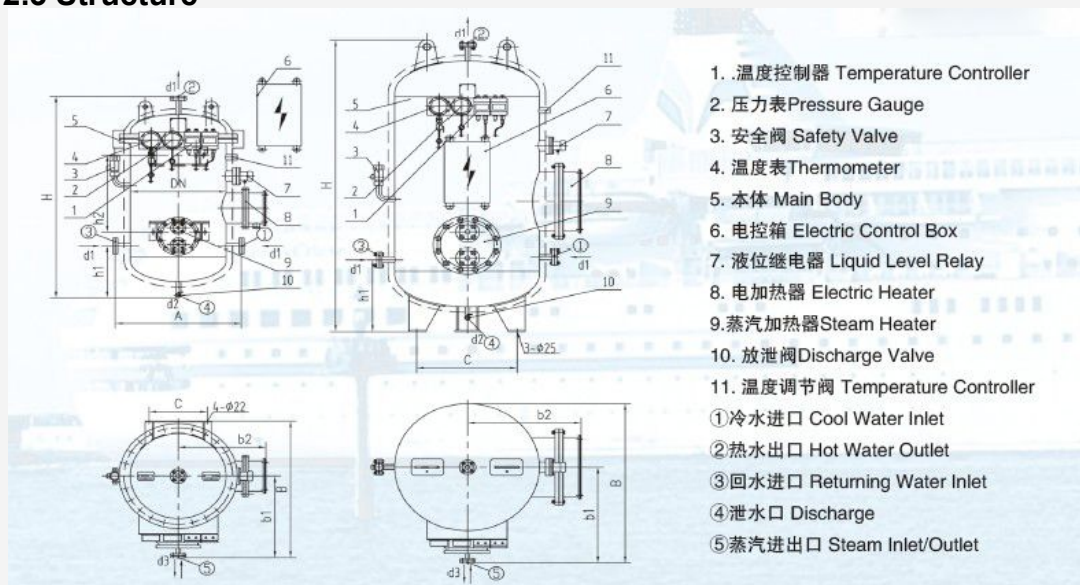
This series tanks are suitable for heating water on the ship or platform, supply hot water for crew

### 2.2 Principle Description

This series tank can be combined with fresh water pressure tank on board.

It can get fresh water from the combined pressure tank, and then supply the crew hot water.

### 2.3 Structure



**2.4 Technical Data**

Model	DRG-				
	0.12	0.2	0.3	0.5	1.0
Capacity(m <sup>3</sup> )	0.12	0.2	0.3	0.5	1.0
Working pressure (MPa)	0.4 ( 60℃ )				
Design pressure(MPa)	0.44				
Test pressure(MPa)	0.66				
Safety valve open pressure(MPa)	0.42				
Water inlet temperature(℃)	15				
Water outlet temperature (℃)	65				
Working temperature(℃)	0~65				
Design temperature(℃)	80				
Heated water capacity(kg/h)	180	360	540	720	900
Electrical heating power(kW)	12	24	36	48	60
The thickness of the external thermal layer(mm)	40				
The thickness of outer galvanized sheet steel(mm)	0.7				
Electricity	AC380/50Hz/3φ, AC440V/60Hz/3φ, etc.				

### 3. YLG Series Pressure Water Tank (Hydrophore)



#### 3.1 Application

The pressure water tank can be used to provide fresh water for living and cleaning of ship and drilling platforms.

#### 3.2 Principle Description

This device depends on the pressure from the supply pump to compress air, then the water in the tank keeping appropriate pressure, to supply the crews. The pump provided by the ship-owner.

#### 3.3 Structure

A : Wall-hanging type, Repair entrance: barrel flange ,

B : Wall-hanging type, Repair entrance: barrel manhole ,

C : Vertical type, Repair entrance: barrel manhole.

CB 455—91

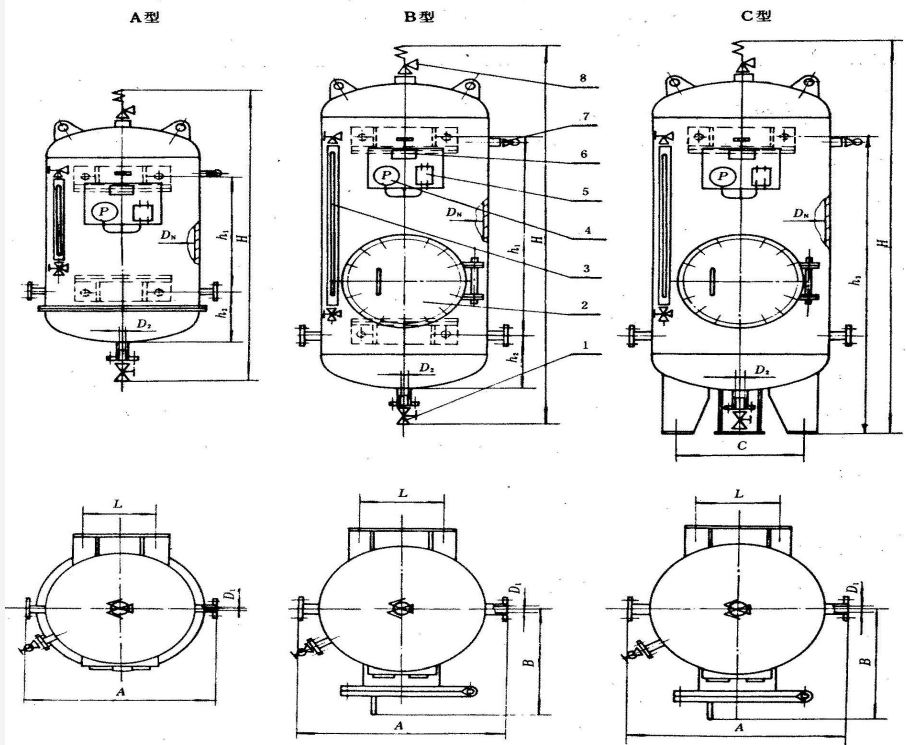


图 1 压力水柜结构型式  
1—法兰截止阀；2—人孔盖；3—液位表；4—压力表；  
5—压力控制器；6—铭牌；7—外螺纹截止阀；8—安全阀

3.4 Technical Data

型式	容积	设计 压力	最高工 作压力	$D_N$	$A$	$B$	$C$	$D_1$	$D_2$	$h_1$	$h_2$	$h_3$	$L$	$H$	重量
	$m^3$	MPa		mm											kg
A	0.12	0.7	0.6	400	542	—	—	$D_N 25$	$D_N 20$	470	257	—	325	1 450	127
	0.20			500	708	—	—			596	280	—	310	1 560	170
	0.30			600	798	—	—	$D_N 32$		600	302	—	370	1 631	215
B	0.50			700	910	625	—			830	307	—	425	1 886	284
	1.00			900	1 100	726	—	$D_N 40$	$D_N 25$	950	442	—	525	2 218	365
C	0.50			700	910	625	$\phi 590$	$D_N 32$	$D_N 20$	—	—	1 337	425	1 866	301
	1.00			900	1 100	726	$\phi 630$	$D_N 40$	$D_N 25$	—	—	1 592	525	2 171	401
	1.50			1 000	1 146	676	$\phi 700$			—	—	1 925	570	2 599	554
	2.00			1 200	1 400	877	$\phi 840$	$D_N 50$		—	—	1 776	600	2 502	654
	3.00				1 400	877	$\phi 840$			—	—	2 659	600	3 420	813



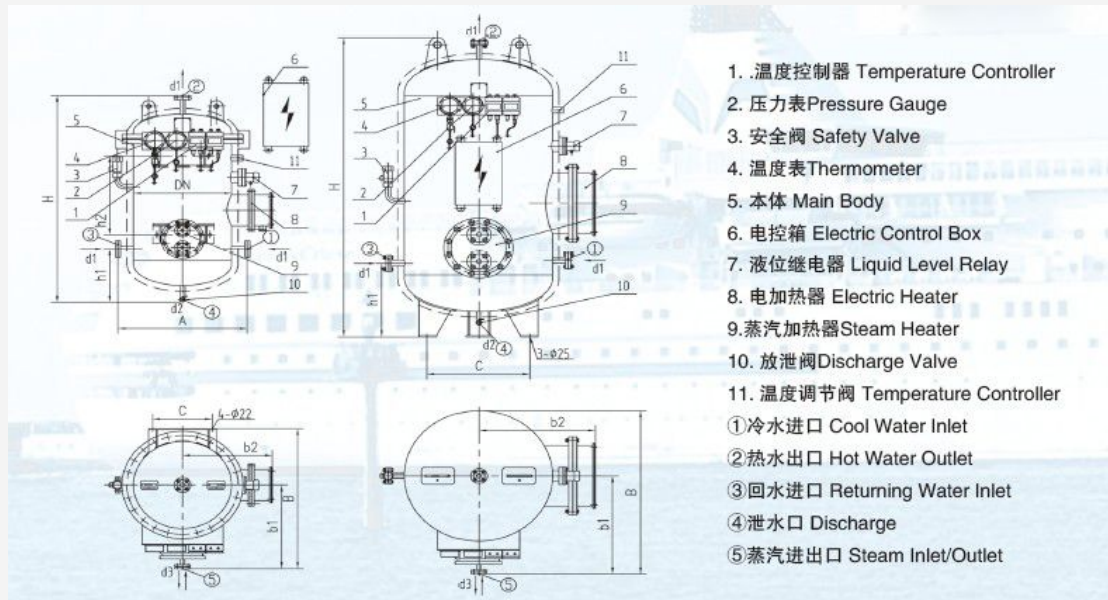
## 4. ZDR Series Steam-electrical Heating Hot Water Tank



### 4.1 Application

This steam-electric hot water tank is suitable for all kinds of ship which have steam source or power. It is good at supply hot water for crews.

### 4.2 Structure





### 4.3 Technical Data

Model	ZDR-				
	0.12	0.2	0.3	0.5	1.0
Capacity(m <sup>3</sup> )	0.12	0.2	0.3	0.5	1.0
Working pressure(MPa)	0.4 ( 60℃ )				
Design pressure(MPa)	0.44				
Test pressure(MPa)	0.68				
Safety valve open pressure(MPa)	0.42				
Water inlet temperature(℃)	15				
Water outlet temperature(℃)	65				
Working temperature(℃)	0~65				
Design temperature(℃)	80				
Steam pressure (MPa)	0.3				
Heated water capacity(kg/h)	275	450	750	1200	3250
Steam consumption (kg/h)	27.5	45	75	120	325
Heated water capacity(kg/h)	180	360	540	720	900
Electrical heating power(kW)	12	24	36	48	60
Electricity	AC380/50Hz/3φ, AC440V/60Hz/3φ(Optional)				
The thickness of the external thermal layer(mm)	40				
The thickness of outer galvanized sheet steel(mm)	0.7				

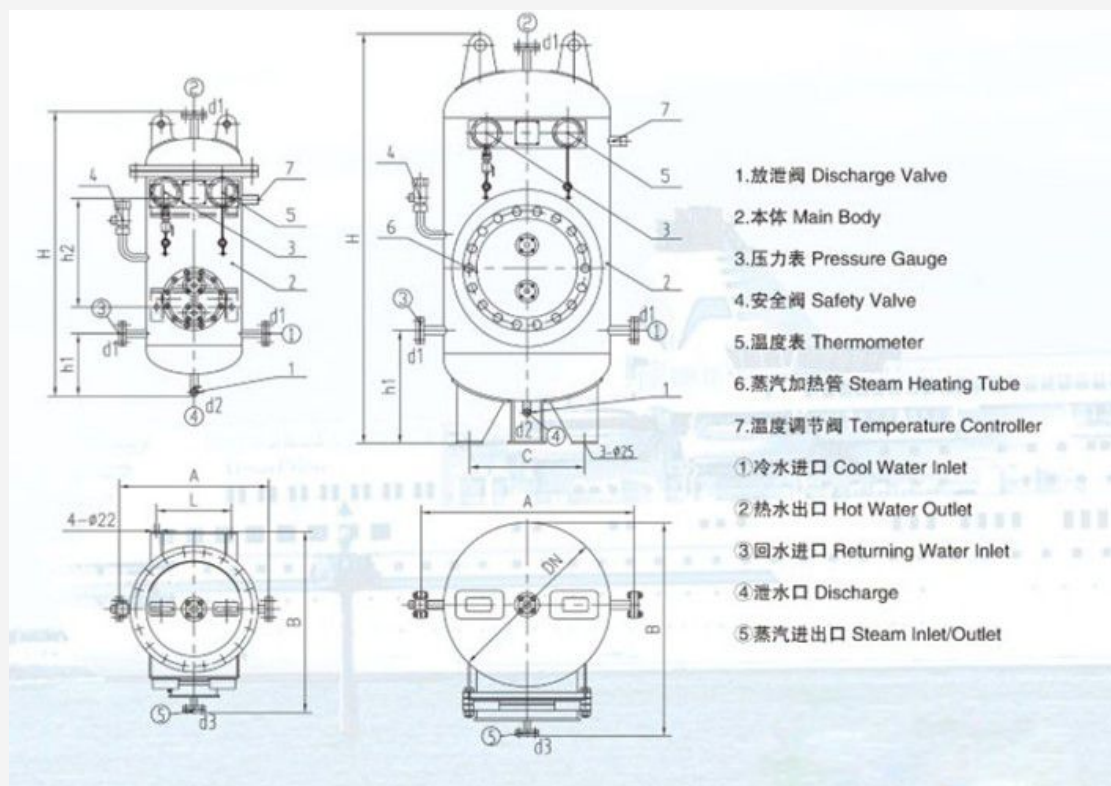
## 5. ZRG Series Steam Heating Hot Water Tank



### 5.1 Application

This series of hot water tank is suitable for fresh water system which is heated by steam.

### 5.2 Structure



**5.3 Technical Data**

Model	ZRG-				
	0.12	0.2	0.3	0.5	1.0
Capacity ( m <sup>3</sup> )	0.12	0.2	0.3	0.5	1.0
Working pressure ( MPa )	0.6 ( 60℃ )				
Design pressure ( MPa )	0.7				
Test pressure ( MPa )	1.05				
Safety valve open pressure ( MPa )	0.63				
Water inlet temperature ( ℃ )	15				
Water outlet temperature ( ℃ )	65				
Working temperature ( ℃ )	0~65				
Design temperature ( ℃ )	80				
Steam pressure ( MPa )	0.3				
Heating water capacity ( kg/h )	275	450	750	1200	3250
steam consumption ( kg/h )	27.5	45	75	120	325
The thickness of the external thermal layer(mm)	40				
The thickness of outer galvanized sheet steel(mm)	0.7				

## 6. ZYG Series Combination Pressure Water Tank



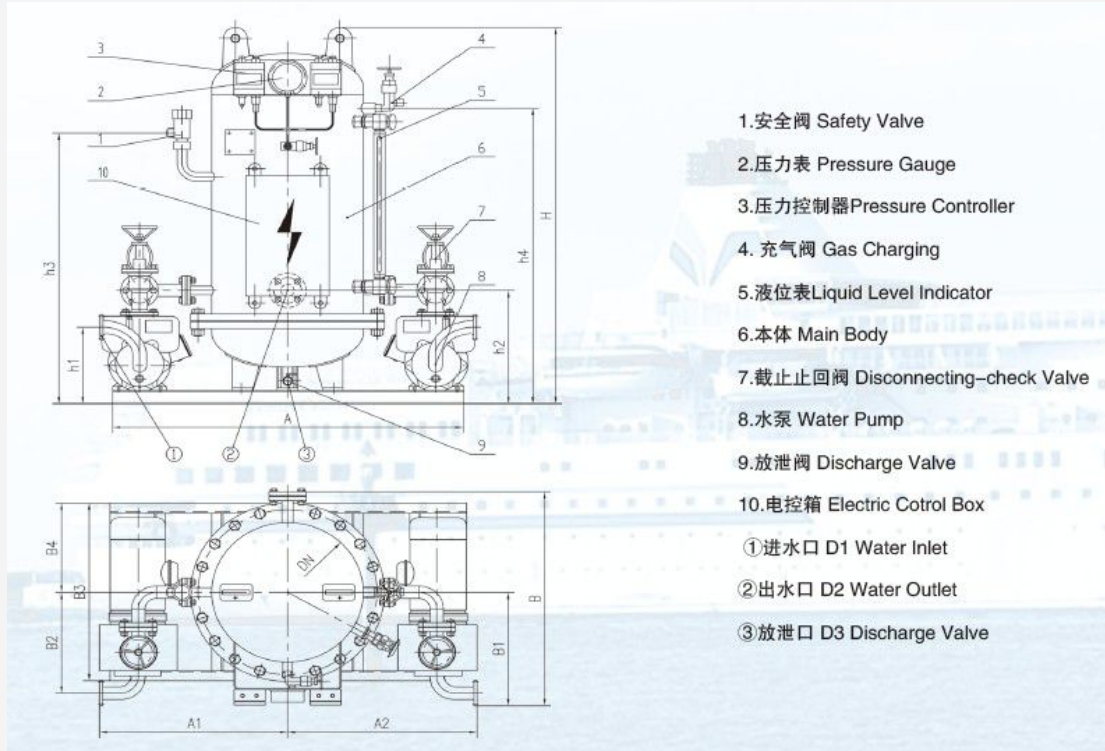
### 6.1 Application

This series of pressure water tank is suitable for ship water supply system which with fresh water and sea water pipes system.

This tank containing pressure water tank, electrical control box, water pump, pressure switch and pipes system.

It is compact and beautiful appearance, easy to install and maintain, and it is an ideal unit for water supply system.

## 6.2 Structure



### 6.3 Technical Data

Model		ZYG-						
		0.1 2	0.2	0.3	0.5	1.0	1.5	2.0
Volume ( m <sup>3</sup> )		0.1 2	0.2	0.3	0.5	1.0	1.5	2.0
Working pressure(MPa)		0.4						
Design pressure ( MPa )		0.44						
Test pressure ( MPa )		0.66						
Take-off pressure of safety valve ( MPa )		0.42						
Working temperature(°C)		0~45						
Design temperature(°C)		50						
Water pump	Model	1.5CWX-1.5/1.5A				1.5CWX-2/2A		1.5CWX-3/3A
	Flow rate ( m <sup>3</sup> /h )	3				6.5		10
	Pumping head (m)	40				40		40
	Power(kW)	2.2				3		4

## 7. Contact us



CHONGQING HI-SEA MARINE EQUIPMENT IMPORT & EXPORT CO., LTD

ADD: F20-5, General Chamber of Commerce Building, No.2 Hongjin Street,  
Yubei District, Chongqing, China, 401147

E-mail: [sales7@hiseamarine.com](mailto:sales7@hiseamarine.com)

MSN: [skeeter2009828@hotmail.com](mailto:skeeter2009828@hotmail.com)

Skype: skeeterdeng

Tel: +86-23-67686362

Fax: +86-23-67956622

[www.hiseamarine.com](http://www.hiseamarine.com), [www.chinahisea.com](http://www.chinahisea.com)

**If you cannot find the information you are looking for, please contact us!**