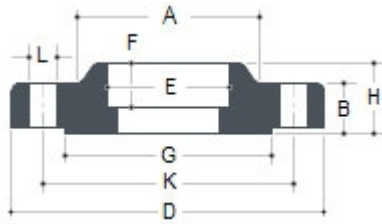


ASTM A105 Carbon Steel SWRF Flange

Drawing



Dimension

DIMENSIONS OF CLASS 150 FLANGES AS PER ANSI B 16.5											
NB		a	D	B	G	K	E	F	H	L	No. of Holes
½"	15	30.2	88.9	11.1	34.9	60.3	22.3	9.5	15.9	15.9	4
¾"	20	38.1	98.4	12.7	42.9	69.8	27.7	11.1	15.9	15.9	4
1"	25	49.2	107.9	14.3	50.8	79.4	34.5	12.7	17.5	15.9	4
1 ¼"	32	58.7	117.5	15.9	63.5	88.9	43.2	14.3	20.6	15.9	4
1 ½"	40	65.1	127.0	17.5	73.0	98.4	49.5	15.9	22.2	15.9	4
2"	50	77.8	152.4	19.0	92.1	120.6	62.0	17.5	25.4	19.0	4
2 ½"	65	90.5	177.8	22.2	104.8	139.7	74.7	19.0	28.6	19.0	4
3"	80	107.9	190.5	23.8	127.0	152.4	90.7	20.6	30.2	19.0	4
4"	100	134.9	230.0	23.8	157.2	190.5	116.1	23.8	33.3	19.0	8
5"	125	163.5	254.0	23.8	185.7	215.9	143.8	23.8	36.5	22.2	8
6"	150	192.1	279.4	25.4	215.9	241.3	170.7	27.0	39.7	22.2	8
8"	200	246.1	342.9	28.6	269.9	298.4	221.5	31.7	44.4	22.2	8
10"	250	304.8	406.4	30.2	323.8	361.9	276.3	33.3	49.2	25.4	12
12"	300	365.1	482.6	31.8	381.0	431.8	327.1	39.7	55.6	25.4	12
14"	350	400.0	533.4	34.9	412.7	476.2	359.1	41.3	57.1	28.6	12
16"	400	457.2	596.9	36.5	469.9	539.7	410.5	44.4	63.5	28.6	16
18"	450	504.8	635.0	39.7	533.4	577.8	461.8	49.2	68.3	31.7	16
20"	500	558.8	698.5	42.9	584.2	635.0	513.1	54.0	73.0	31.7	20
24"	600	663.6	812.8	47.6	692.1	749.3	615.9	63.5	82.5	34.9	20

DIMENSIONS OF CLASS 300 FLANGES AS PER ANSI B 16.5											
NB		a	D	B	G	K	E	F	H	L	No. of Holes
½"	15	38.1	95.2	14.3	34.9	66.7	22.3	9.5	22.2	15.9	4
¾"	20	47.6	117.5	15.9	42.9	82.5	27.7	11.1	25.4	19.0	4
1"	25	54.0	123.8	17.5	50.8	88.9	34.5	12.7	27.0	19.0	4
1 ¼"	32	63.5	133.3	19.0	63.5	98.4	43.2	14.3	27.0	19.0	4
1 ½"	40	69.8	155.6	20.6	73.0	114.3	49.5	15.9	30.2	22.2	4
2"	50	84.1	165.1	22.2	92.1	127.0	62.0	17.5	33.3	19.0	8
2 ½"	65	100.0	190.5	25.4	104.8	149.2	74.7	19.0	38.1	22.2	8
3"	80	117.5	209.5	28.6	127.0	168.3	90.7	20.6	42.9	22.2	8
4"	100	146.0	254.0	31.8	157.2	200.0	116.1	23.8	47.6	22.2	8
5"	125	177.8	279.4	34.9	185.7	234.9	143.8	23.8	50.8	22.2	8
6"	150	206.4	317.5	36.5	215.9	269.9	170.7	27.0	52.4	22.2	12
8"	200	260.3	381.0	41.3	269.9	330.2	221.5	31.7	61.9	25.4	12
10"	250	320.7	444.5	47.6	323.8	387.3	276.3	33.3	66.7	28.6	16
12"	300	374.6	520.7	50.8	381.0	450.8	327.1	39.7	73.0	31.7	16
14"	350	425.4	584.2	54.0	412.7	514.3	359.1	41.3	76.2	31.7	20
16"	400	482.6	647.7	57.2	469.9	571.5	410.5	44.4	82.5	34.9	20
18"	450	533.4	711.2	60.3	533.4	628.5	461.8	49.2	88.9	34.9	24
20"	500	587.4	774.7	63.5	584.2	685.8	513.1	54.0	95.2	34.9	24
24"	600	701.7	914.4	69.8	692.1	812.8	615.9	63.5	106.4	41.3	24

DIMENSIONS OF CLASS 600 FLANGES AS PER ANSI B 16.5											
NB		a	D	B	G	K	E	F	H	L	No. of Holes
½"	15	38.1	95.2	14.3	34.9	66.7	22.3	9.5	22.2	15.9	4
¾"	20	47.6	117.5	15.9	42.9	82.5	27.7	11.1	25.4	19.0	4
1"	25	54.0	123.8	17.5	50.8	88.9	34.5	12.7	27.0	19.0	4
1 ¼"	32	63.5	133.3	20.6	63.5	98.4	43.2	14.3	28.6	19.0	4
1 ½"	40	69.8	155.6	22.2	73.0	114.3	49.5	15.9	31.7	22.2	4
2"	50	84.1	165.1	25.4	92.1	127.0	62.0	17.5	36.5	19.0	8
2 ½"	65	100.0	190.5	28.6	104.8	149.2	74.7	19.0	41.3	22.2	8
3"	80	117.5	209.5	31.8	127.0	168.3	90.7	20.6	46.0	22.2	8
4"	100	152.4	273.0	38.1	157.2	215.9	116.1	23.8	54.0	25.4	8
5"	125	188.9	330.2	44.4	185.7	266.7	143.8	23.8	60.3	28.6	8
6"	150	222.2	355.6	47.6	215.9	292.1	170.7	27.0	66.7	28.6	12
8"	200	273.0	419.1	55.6	269.9	349.2	221.5	31.7	76.2	31.7	12
10"	250	342.9	508.0	63.5	323.8	431.8	276.3	33.3	85.7	34.9	16
12"	300	400.0	558.8	66.7	381.0	488.9	327.1	39.7	92.1	34.9	20
14"	350	431.8	603.2	69.9	412.7	527.0	359.1	41.3	93.7	38.1	20
16"	400	495.3	685.8	75.2	469.9	603.2	410.5	44.4	106.4	41.3	20
18"	450	546.0	742.9	82.6	533.4	654.0	461.8	49.2	117.5	44.4	20
20"	500	609.6	812.8	88.9	584.2	723.9	513.1	54.0	127.0	44.4	24
24"	600	717.6	939.8	101.6	692.1	838.2	615.9	63.5	139.7	50.8	24

All dimensions are in millimeters unless indicated.