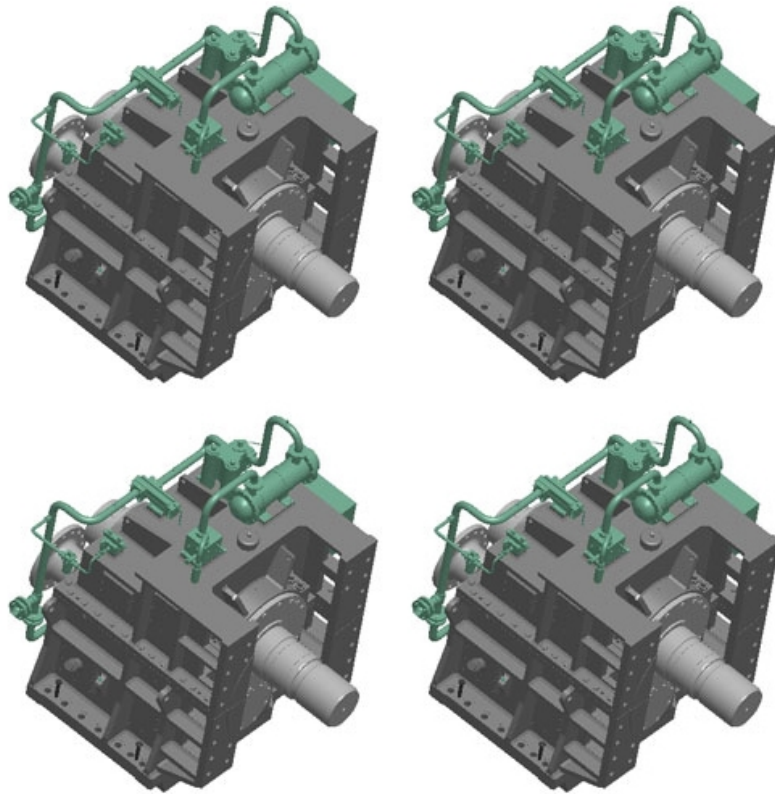
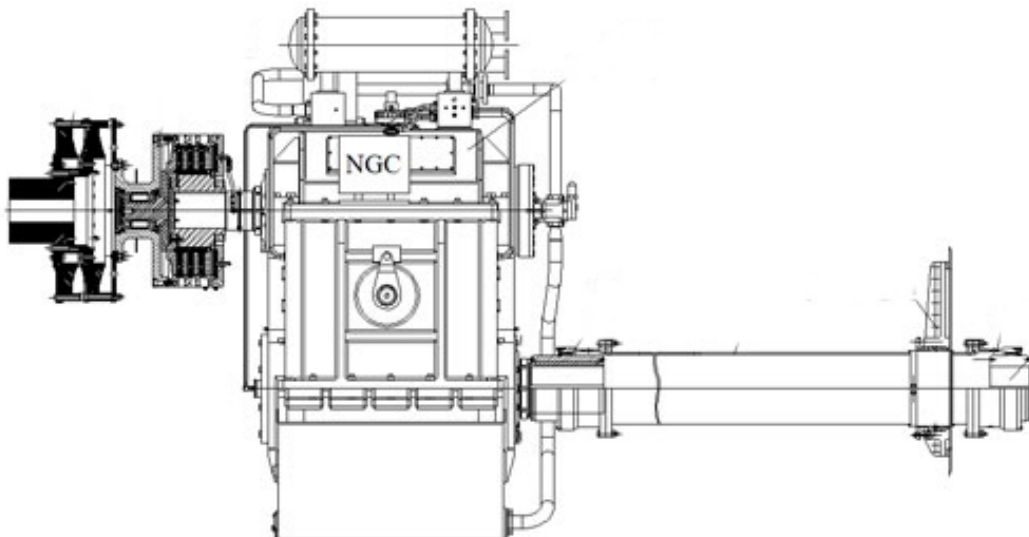


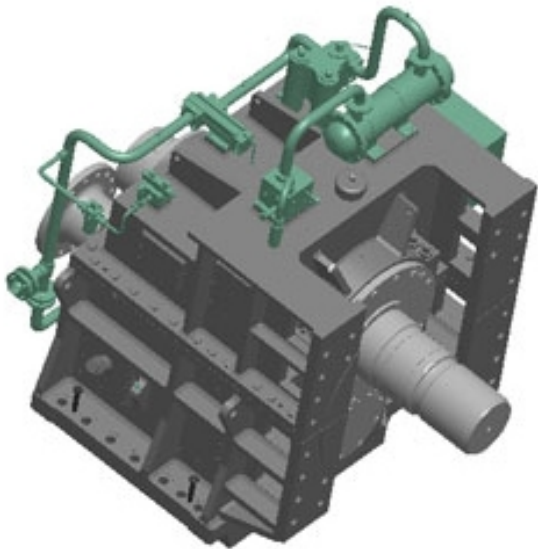
Dredger gearbox for Dredge pump



Apply for large submerged dredge pump driving section of cutter dredger, hopper dredger and bucket wheel dredger. Features of working condition: big change to the sand and water density, different speed conversion, super large torque, big pull, compartment transmission.



Designing solution of cabin pump driving system of hopper dredger



Dredge pump & gearbox integrated-in-one:

- Input power: 3700kW;
- Input speed 1000rpm;
- Output speed 282rpm;
- Applies for 4500m³ cutter dredge;

Double ratio gearbox:

- Input power: 3300kW
- Input speed 600rpm;
- Output speed 340rpm (Pump off);
- Output speed 220rpm (Stowing);
- Applies for 8000m³ hopper dredger;



Chongqing Hi-Sea Marine Equipment Import&Export Co.,Ltd.

Address: 20-5,General Chamber of Commerce Building, No.2 Hongjin Street, Yubei District, Chongqing, China

Email: machine@hiseamarine.com mitang0708@foxmail.com **Skype:** cncqtang **QQ:** 2278612160

TEL: +86-23-67032301 **FAX:**+86-23-67955123 **Mobile:** +86-18108354610 **Post Code:**401147

Website: www.hiseamarine.com www.chinahisea.com