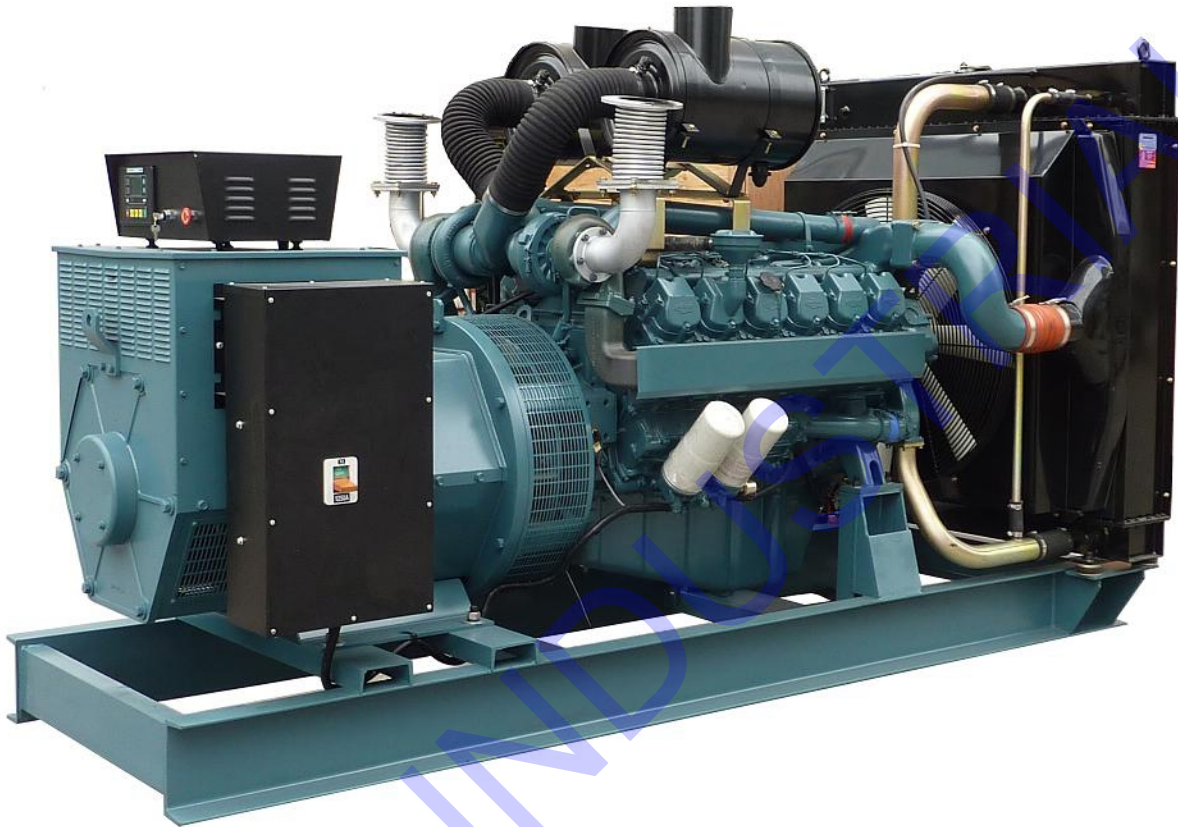


Doosan(Daewoo) series diesel generator set

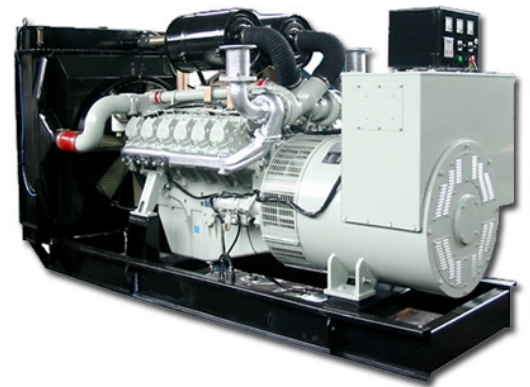


Doosan(Daewoo) series diesel generator sets which has the high performance-to-price ratio. The South Korean Daewoo Joint-stock company was founded in 1937, since its products have been representing the South Korean mechanical industry level of development, in domains and so on diesel engine, excavator, vehicles, automatic machine, robot has created the recognition achievement; In the diesel engine aspect, cooperated production ships engine with Australia in 1958, cooperated has promoted the series heavy load diesel engine with German MAN Corporation in 1975; established the European Daewoo Factory in 1990, Daewoo Heavy industry Yantai Corporation in 1994, and the American Daewoo Heavy industry Company in 1996. The Daewoo diesel engine is widely applied in the national defense, the aviation, the vehicles, the ships, the engineering machinery, the power set; also be accepted with its small volume, the light weight, the strong anti-shock load ability, the low noise, reliable economy.



TECHNICAL DATA

Type	Power(kw)		Engine type	Cylinder No.	Displacement(L)	Lubrication capacity(L)	Fuel consumption (g/kw.h)	Dimension L*W*H (mm)	Weight (kg)
	Prime	Standby							
D55	50	55	DB58	6	5.785	15	231	2050*800*1000	820
D85	77	85	D1146	6	8.071	17.5	222	2370*790*1200	1050
D118	107	118	D1146T	6	8.071	17.5	200	2370*790*1200	1160
D145	132	145	P086TI-1	6	8.071	18	202	2600*1000*1500	1750
D180	160	180	P086TI	6	8.071	15.5	202	2680*950*1430	2200
D272	241	272	O126TI	6	11.051	23	200	2910*1050*1530	2450
D260	240	260	P126TI-11	6	11.05	23	202	2910*1050*1530	2450
D320	280	320	P158LE-1	8	14.61	28	204	3120*1390*1830	2930
D370	320	370	P158LE	8	14.61	28	204	3120*1390*1830	2950
D400	360	400	P158LE-S	8	14.61	28	209	3120*1390*1830	3150
D450	400	450	P180LE	10	18.27	38	205	3295*1390*1830	3500
D440	400	440	P180le-s	10	18.273	38	205	3295*1390*1830	3500
D550	500	550	P222LE-1	12	21.927	40	200	3450*1390*1840	3500
D550	500	550	P222LE	12	21.927	40	209	3450*1390*1840	3500
D600	550	600	P222LE-S	12	21.92	40	142	3450*1390*1850	3700
D630	570	630	P222LE-11	12	21.92	40	212	3450*1390*1850	3900
D652		652	P222FE-11	12	21.920	40	163	3450*1400*1900	4000



Chongqing Hi-Sea Marine Equipment Import&Export Co.,Ltd.

Address: 20-5,General Chamber of Commerce Building, No.2 Hongjin Street, Yubei District, Chongqing, China

Email: machine@hiseamarine.com mitang0708@foxmail.com **Skype:** cncqtang **QQ:** 2278612160

TEL: +86-23-67032301 **FAX:**+86-23-67955123 **Mobile:** +86-18108354610 **Post Code:**401147

Website: www.hiseamarine.com www.chinahisea.com