

Cummins series marine emergency generator



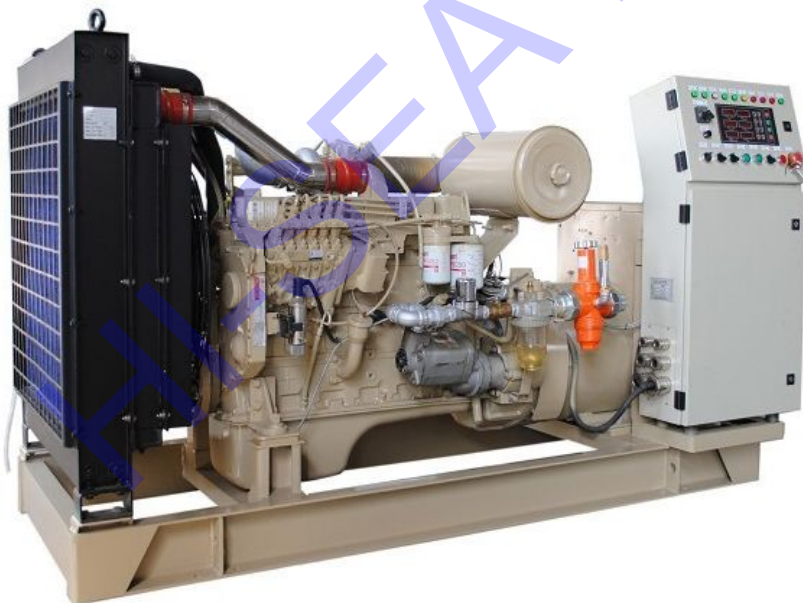
Cummins series marine emergency generator:

1. Power range 40KW-600KW (50KVA-725KVA)
2. 50Hz/1500RPM, 60Hz/1800RPM
3. Powered by Cummins engine coupled with Marathon Alternator, SUNVIM、Stamford、Siemens alternator are optional
4. EIAPP (Nox) certificate
5. CCS, BV approved



TECHNICAL SPECIFICATIONS

Genset Specification				Engine Specification				Alternator Specification		Unit appearance	
Model	Rated Output		Fre/Volt	Model	Power/Speed	Cyl.	Fuel consumption (L/H)	Model		Dimension L×W×H(mm)	Weight (Kgs)
	Kw	KVA	Hz/ V		Kw/RPM			Marathon	Sunvim		
CE40YW	40	50	50/400	4BTA3.9-GM47	47/1500	4	10.02	MP-H-40-4	SVH224	1810*730*1280	1000
CE50YW	50	63	50/400	6BT5.9-GM83	83/1500	6	12.47	MP-H-50-4	SVH224	2090*850*1280	1100
CE75YW	75	94	50/400	6BTAA5.9-GM115	115/1500	6	21.52	MP-H-75-4	SVH274	2180*850*1280	1450
CE90YW	90	113	50/400	6BTAA5.9-GM115	115/1500	6	22.45	MP-H-90-4	SVH274	2200*700*1300	1500
CE100YW	100	125	50/400	6BTAA5.9-GM115	115/1500	6	24.94	MP-H-100-4	SVH274	2200*700*1300	1550
CE120YW	120	150	50/400	6CTA8.3-GM155	155/1500	6	29.93	MP-H-120-4	SVH274	2300*790*1390	2500
CE150YW	150	187.5	50/400	NT855-DM	180/1500	6	36.71	MP-H-150-4	SVH274	2890*1220*1750	2600
CE200YW	200	250	50/400	NTA855-DM	240/1500	6	48.94	MP-H-200-4	SVH314	2950*1220*1750	2750
CE250YW	250	313	50/400	NTA855-DM	284/1500	6	61.18	MP-H-250-4	SVH314	3010*1220*1750	2850
CE300YW	300	375	50/400	KTA19-DM	336/1500	6	72.71	MP-H-300-4	SVH354	3550*1500*2350	3100
CE350YW	350	438	50/400	KTA19-DM	403/1500	6	84.82	MP-H-350-4	SVH354	3550*1500*2350	3600
CE400YW	400	500	50/400	KTA19-DM	448/1500	6	96.94	MX-H-400-4	SVH354	3550*1500*2350	3800
CE500YW	500	625	50/400	KT38-DM	560/1500	12	121.76	MX-H-500-4	SVH354	4800*1780*2350	7300



90kw Cummins marine emergency generator

Chongqing Hi-Sea Marine Equipment Import&Export Co.,Ltd.

Address: 20-5,General Chamber of Commerce Building, No.2 Hongjin Street, Yubei District, Chongqing, China

Email: machine@hiseamarine.com mitang0708@foxmail.com **Skype:** cncqtang **QQ:** 2278612160

TEL: +86-23-67032301 **FAX:** +86-23-67955123 **Mobile:** +86-18108354610 **Post Code:**401147

Website: www.hiseamarine.com www.chinahisea.com