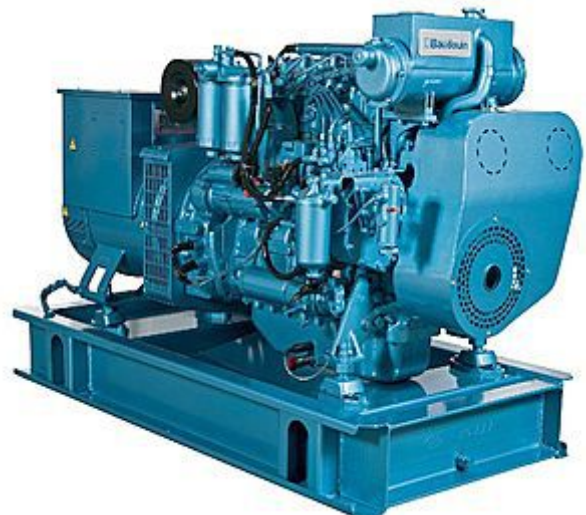


DEUTZ series marine generator



DEUTZ series marine generator features:

1. Power range 50KVA-150KVA (40Kw-120Kw)
2. 50HZ/1500RPM and 60HZ/1800RPM
3. Powered by DEUTZ engine coupled with Marathon Alternator, SUNVIM, Stamford, Siemens alternator are optional
4. EIAPP (Nox) certificate
5. CCS, BV, RS, DNV, GL, LR, RINA, ABS approved



TECHNICAL SPECIFICATIONS

Genset Specification				Engine Specification				Alternator Specification		Unit appearance	
Model	Rated Output		Fre/Volt	Model	Power/Speed	Cyl.	Fuel consumption (L/.H)	Model		Dimension L×W×H(mm)	Weight (Kgs)
	KW	KVA	Hz/ V		Kw/RPM			Marathon	Sunvim		
FJ40JW	40	50	50/400	WP4CD60-15	60/1500	4	7.9	MP-H-40-4	SVH224	1663*620*1242	970
FJ50JW	50	62.5	50/400	WP4CD60-15	60/1500	4	9.9	MP-H-50-4	SVH224	1663*620*1242	1000
FJ64JW	64	80	50/400	WP4CD75-15	75/1500	6	12.8	MP-H-64-4	SVH274	1958*798*1340	1100
FJ75JW	75	93.8	50/400	WP6CD90-15	90/1500	6	16	MP-H-75-4	SVH274	1958*798*1340	1150
FJ100JW	100	125	50/400	WP6CD120-15	120/1500	6	20	MP-H-100-4	SVH274	2068*798*1340	1380
FJ120JW	120	150	50/400	WP6CD132-15	132/1500	6	22	MP-H-120-4	SVH274	2080*800*1340	1400
FJ50JW	50	62.5	60/440	WP4CD60-15	60/1800	4	9.9	MP-H-50-4	SVH224	1663*620*1242	1000
FJ64JW	64	80	60/440	WP4CD75-15	75/1800	6	12.8	MP-H-64-4	SVH224	1958*798*1340	1100
FJ75JW	75	93.8	60/440	WP6CD90-15	90/1800	6	16	MP-H-75-4	SVH274	1958*798*1340	1150
FJ100JW	100	125	60/440	WP6CD120-15	120/1800	6	20	MP-H-100-4	SVH274	2068*798*1340	1380
FJ120JW	120	150	60/440	WP6CD132-15	132/1800	6	22	MP-H-120-4	SVH274	2080*800*1340	1400



Chongqing Hi-Sea Marine Equipment Import&Export Co.,Ltd.

Address: 20-5,General Chamber of Commerce Building, No.2 Hongjin Street, Yubei District, Chongqing, China

Email: machine@hiseamarine.com mitang0708@foxmail.com **Skype:** cncqtang **QQ:** 2278612160

TEL: +86-23-67032301 **FAX:**+86-23-67955123 **Mobile:** +86-18108354610 **Post Code:**401147

Website: www.hiseamarine.com www.chinahisea.com