

Zichai series marine generator



Zichai series marine generator;

1. Power range 200Kw-800Kw (250KVA-1000KVA)
2. Powered by 170、210 engine coupled with Siemens Alternator, 170、210
3. 210 engine fuel light diesel oil or heavy oil, (heavy oil) fuel consumption + 5%
4. EIAPP (Nox) certificate
5. ZC、CCS、BV approved



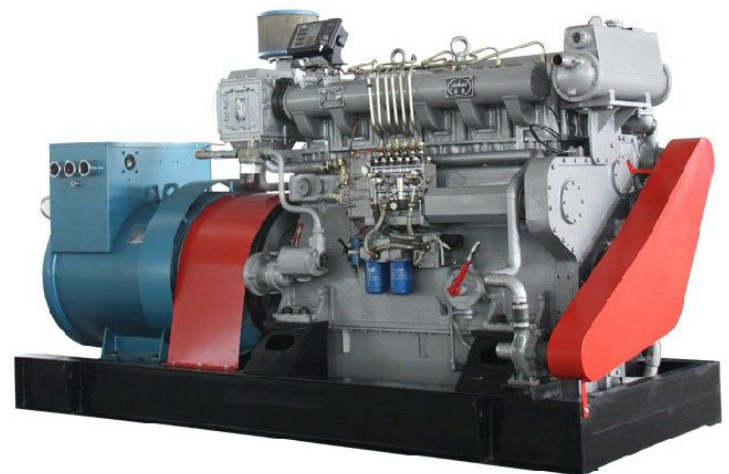
300KW Zichai marine generator

TECHNICAL SPECIFICATIONS

Genset Specification				Engine Specification				Alternator Specification	Unit appearance	
Model	Rated Output		Fre/Vol	Model	Cyl.	Power/Speed	Fuel consumption	Model	Dimension	Weight
	Kw	KVA	Hz/V			Kw/RPM		(L/ H)		
ZC200JW	200	250	50/400	Z6170ZLD-2	6	258/1000	47.06	1FC5 356-6	3760*1410*1970	5200
ZC250JW	250	313	50/400	Z6170ZLD	6	300/1000	58.82	1FC5 404-6	3820*1410*1970	5400
ZC300JW	300	375	50/400	Z6170ZLD-19	6	330/1000	70.59	1FC5 406-6	3920*1410*1970	5500
ZC350JW	350	438	50/400	Z6170ZLD-7	6	400/1500	82.35	1FC5 404-4	3820*1410*2200	6000
ZC400JW	400	500	50/400	Z6170ZLD-8	6	450/1500	94.12	1FC5 406-4	3920*1410*2200	6300
ZC450JW	450	563	50/400	Z8170ZLD-7	8	540/1500	105.88	1FC5 406-4	3920*1410*2200	6500
ZC500JW	500	625	50/400	Z8170ZLD-8	8	600/1500	117.65	1FC5 454-4	3960*1410*2200	6800
ZC400JW	400	500	50/400	Z5210ZLD-4	5	500/750	95.16	1FC5 456-8	4870*1500*2530	9300
ZC450JW	450	563	50/400	Z5210ZLD-5	5	550/750	106.94	1FC5 502-8	4850*1500*2530	9500
ZC500JW	500	625	50/400	Z6210ZLD-10	6	610/750	118.82	1FC5 504-8	5250*1500*2580	11100
ZC550JW	550	688	50/400	Z6210ZLD-5	6	662/750	130.71	1FC5 506-8	5370*1500*2580	11200
ZC600JW	600	750	50/400	Z6210ZLD-8	6	735/1000	142.58	1FC5 502-6	5130*1500*2580	11000
ZC750JW	750	938	50/400	Z8210ZLD-5	8	883/750	178.23	1FC5 564-8	6080*1500*2790	14000
ZC800JW	800	1000	50/400	Z8210ZLD-8	8	980/1000	190.12	1FC5 506-6	6120*1500*2790	14500



Zichai marine generator



Chongqing Hi-Sea Marine Equipment Import&Export Co.,Ltd.

Address: 20-5,General Chamber of Commerce Building, No.2 Hongjin Street, Yubei District, Chongqing, China

Email: machine@hiseamarine.com mitang0708@foxmail.com **Skype:** cncqtang **QQ:** 2278612160

TEL: +86-23-67032301 **FAX:** +86-23-67955123 **Mobile:** +86-18108354610 **Post Code:**401147

Website: www.hiseamarine.com www.chinahisea.com