

## 12kw marine diesel generator



### General features:

- Coupled with Weichai diesel engine and Sunvim alternator
- 12V DC start motor
- Brushless, Self-excited, IP23, insulation class H alternator

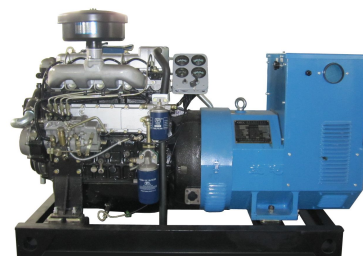
### Genset Main Technical Data

3-PH, 50Hz@1500RPM, 400/230V ,12KW(Also Can Be Made According To Customers' Special Requirements)

Voltage	HZ	Phase	PF (COS $\phi$ )	Output (KW)
400/230V	50	3	0.8	12

### Criterion

- GB/T13032-1991
- ISO9001:2008 Quality Control System
- CCS ,BV,ABS,GL,DNV approved



### ENGINE--Technical Data

Number of Cylinders	4 cylinders in line
Cycle	4 stroke
Aspiration	Turbocharged and aftercooled
Bore×Stroke	85 x92 mm
Displacement	2.1 L
Prime Power / speed	17.5KW / 1500rpm
Speed Governor	Mechanical
Cooling System	By heat exchanger
Fuel Consumption at 100% Load	213 g/kw.h
Starter Motor	DC12V,

### Alternator--Technical Data

Prime power	12KW
Frequency/speed	50HZ/1500rpm
Exciter type	Brushless, Self-excited
Power factor	0.8
Insulation Grade	H
Protection Grade	IP23
Phase / wire	3 phase 3 wires



**Chongqing Hi-Sea Marine Equipment Import&Export Co.,Ltd.**

**Address:** 20-5,General Chamber of Commerce Building, No.2 Hongjin Street, Yubei District, Chongqing, China

**Email:** machine@hiseamarine.com mitang0708@foxmail.com **Skype:** cncqtang **QQ:** 2278612160

**TEL:** +86-23-67032301 **FAX:** +86-23-67955123 **Mobile:** +86-18108354610 **Post Code:**401147

**Website:** www.hiseamarine.com www.chinahisea.com