

## BS4504 PN2.5 Flanges

Weld neck flange

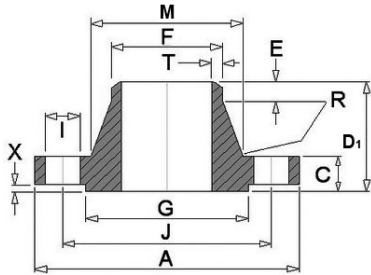
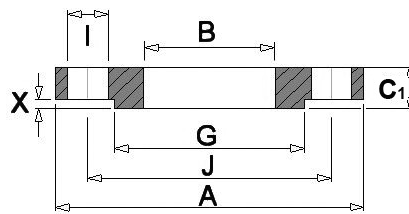
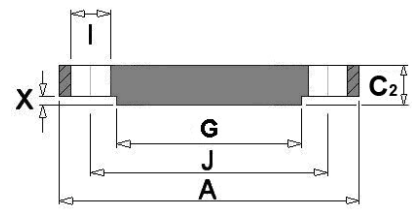


Plate flange



Blind flange



Dimensions in mm

Nom. Size	Flange					Raised Face		Drilling			Bolting	Neck					Bore Diameter
	A	C	C1	C2	D1	G	X	No.	I	J		M	F	E	R	T	
10	75	12	12	12	28	35	2	4	11	50	M10	26	17.2	6	3	1.8	18.0
15	80	12	12	12	30	40	2	4	11	55	M10	30	21.3	6	3	2.0	22.0
20	90	14	14	14	32	50	2	4	11	65	M10	38	26.9	6	4	2.3	27.5
25	100	14	14	14	35	60	2	4	11	75	M10	42	33.7	6	4	2.6	34.5
32	120	14	16	14	35	70	2	4	14	90	M12	55	42.4	6	5	2.6	43.5
40	130	14	16	14	38	80	3	4	14	100	M12	62	48.3	7	5	2.6	49.5
50	140	14	16	14	38	90	3	4	14	110	M12	74	60.3	8	5	2.9	61.5
65	160	14	16	14	38	110	3	4	14	130	M12	88	76.1	9	6	2.9	77.5
80	190	16	18	16	42	128	3	4	18	150	M16	102	88.9	10	6	3.2	90.5
100	210	16	18	16	45	148	3	4	18	170	M16	130	114.3	10	6	3.6	116.0
125	240	18	20	18	48	178	3	8	18	200	M16	155	139.7	10	6	4.0	141.5
150	265	18	20	18	48	202	3	8	18	225	M16	184	168.3	12	8	4.5	170.5
200	320	20	22	20	55	258	3	8	18	280	M16	236	219.1	15	8	5.6	221.5
250	375	22	24	22	60	312	3	12	18	335	M16	290	273.0	15	10	6.3	276.5
300	440	22	24	22	62	365	4	12	22	395	M20	342	323.9	15	10	7.1	327.6
350	490	22	26	22	62	415	4	12	22	445	M20	385	355.6	15	10	7.1	359.0
400	540	22	28	22	65	465	4	16	22	495	M20	438	406.4	15	10	7.1	411.0
450	595	24	30	24	65	520	4	16	22	550	M20	492	457.0	15	12	7.1	462.0
500	645	24	30	24	68	570	4	20	22	600	M20	538	508.0	15	12	7.1	513.5
600	755	24	32	34	70	670	5	20	26	705	M24	640	610.0	16	12	7.1	616.5
700	860	24	36	-	70	-	5	24	26	810	M24	740	711.0	16	12	-	-
800	975	26	38	-	70	-	5	24	30	920	M27	842	813.0	16	12	-	-
900	1075	26	40	-	70	-	5	24	30	1020	M27	942	914.0	16	12	-	-
1000	1175	26	42	-	70	-	5	28	30	1120	M27	1045	1016.0	16	12	-	-
1200	1375	26	44	-	70	-	5	32	30	1320	M27	1245	1220.0	16	16	-	-
1400	1575	26	48	-	70	-	5	36	30	1520	M27	1445	1420.0	16	16	-	-
1600	1790	26	51	-	80	-	5	40	30	1730	M27	1645	1620.0	20	16	-	-
1800	1990	26	54	-	80	-	5	44	30	1930	M27	1845	1820.0	20	16	-	-
2000	2190	26	58	-	80	-	5	48	30	2130	M27	2045	2020.0	22	16	-	-

1. Weld neck flanges are bored to suit schedule of pipework used.
2. Blind flanges are supplied flat faced unless otherwise requested by the purchaser.