

BS4504 PN25 Flanges

Weld neck flange

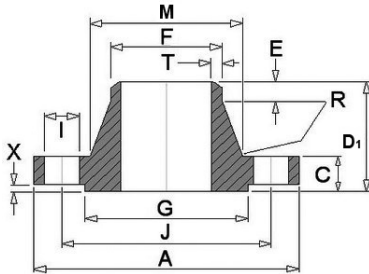
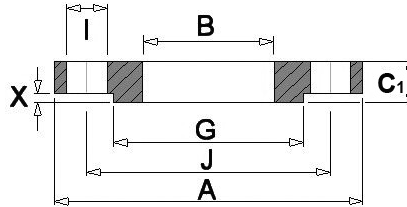
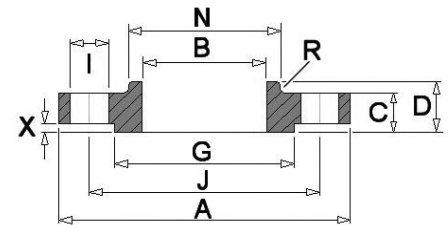


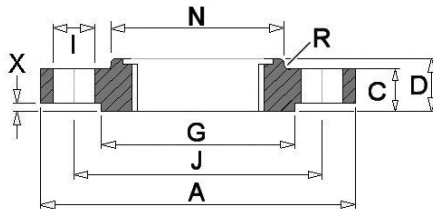
Plate flange



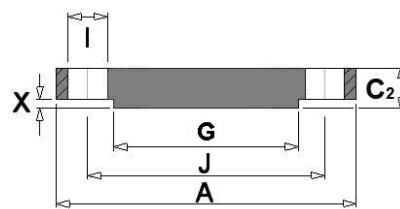
Slip-on flange



Socket welding flange



Blind flange



Dimensions in mm

Nom. Size	Flange					Raised Face		Boss	Drilling			Bolting	Neck					Bore Diameter	
	A	C	C1	C2	D	D1	G		X	No.	I		J	M	F	E	R		T
10	90	16	14	16	22	35	40	2	30	4	14	60	M12	28	17.2	6	3	1.8	18.0
15	95	16	14	16	22	38	45	2	35	4	14	65	M12	32	21.3	6	3	2.0	22.0
20	105	18	16	18	26	40	58	2	45	4	14	75	M12	40	26.9	6	4	2.3	27.5
25	115	18	16	18	28	40	68	2	52	4	14	85	M12	46	33.7	6	4	2.6	34.5
32	140	18	18	18	30	42	78	2	60	4	18	100	M16	56	42.4	6	5	2.6	43.5
40	150	18	18	18	32	45	88	3	70	4	18	110	M16	64	48.3	7	5	2.6	49.5
50	165	20	20	20	34	48	102	3	84	4	18	125	M16	74	60.3	8	5	2.9	61.5
65	185	22	22	22	38	52	122	3	104	8	18	145	M16	92	76.1	10	6	2.9	77.5
80	200	24	24	24	40	58	138	3	118	8	18	160	M16	110	88.9	12	6	3.2	90.5
100	235	24	26	24	44	65	162	3	145	8	22	190	M20	134	114.3	12	6	3.6	116.0
125	270	26	28	26	48	68	188	3	170	8	26	220	M24	162	139.7	12	6	4.0	141.5
150	300	28	30	28	52	75	218	3	200	8	26	250	M24	190	168.3	12	8	4.5	170.5
200	360	30	32	30	52	80	278	3	256	12	26	310	M24	244	219.1	16	8	6.3	221.5
250	425	32	35	32	60	88	335	3	310	12	30	370	M27	296	273.0	18	10	7.1	276.5
300	485	34	38	34	67	92	395	4	364	16	30	430	M27	350	323.9	18	10	8.0	327.5
350	555	38	42	38	72	100	450	4	418	16	33	490	M30	398	355.6	20	10	8.0	359.5
400	620	40	46	40	78	110	505	4	472	16	36	550	M33	452	406.4	20	10	8.8	411.0
450	670	42	50	44	84	110	555	4	520	20	36	600	M33	500	457.0	20	12	8.8	462.0
500	730	44	56	45	90	125	615	4	580	20	36	660	M33	558	508.0	20	12	10.0	513.5
600	845	46	68	54	100	125	720	5	684	20	39	770	M36	660	610.0	20	12	11.0	616.5
700	960	46	-	-	-	125	820	5	-	24	42	875	M39	760	711.0	20	12	12.5	-
800	1085	50	-	-	-	135	930	5	-	24	48	990	M45	864	813.0	22	12	14.2	-
900	1185	54	-	-	-	145	1030	5	-	28	48	1090	M45	968	914.0	24	12	16.0	-
1000	1320	58	-	-	-	155	1140	5	-	28	56	1210	M52	1070	1016.0	24	12	17.5	-
1200	1530	-	-	-	-	-	1350	5	-	32	56	1420	M52	-	1220.0	-	12	12.5	-
1400	1755	-	-	-	-	-	1560	5	-	36	62	1640	M56	-	1420.0	-	12	14.2	-
1600	1975	-	-	-	-	-	1780	5	-	40	62	1860	M56	-	1620.0	-	12	16.0	-
1800	2185	-	-	-	-	-	1985	5	-	44	70	2070	M64	-	1820.0	-	15	17.5	-
2000	2425	-	-	-	-	-	2210	5	-	48	70	2300	M64	-	2020.0	-	15	20.0	-

1. Weld neck flanges are bored to suit schedule of pipework used.
2. Blind flanges are supplied flat faced unless otherwise requested by the purchaser.
3. For information sizes DN10 to DN150 use PN40 dimensions.