



30 Ton harbour towing hook:

Pneumatic Release Harbour Towing Hook enable ships to be towed safely under severe working conditions, and allow the towing line to be released whether slack or under full safe working load. The towing hooks have a quick release mechanism that facilitates the instantaneous disengagement of the towing line to ensure the safety of the tug and personnel. The hook can be released manually or from the wheel house by pulling the release wire or by pushing a button. Remote control systems can be supplied with either a hydraulic or pneumatic release mechanism.

1.Product description:

Type: Harbour Type

Movement: Side movement

Material of hook:EH36 Material of protect panel:Q345B Material of bolt:35CrMo

Pneumatic Release from wheel house Manual Release at hook body

Solenoid Voltage:24V DC The Length of Rubber Hose:20M Max Inlet Pressure:30Bar

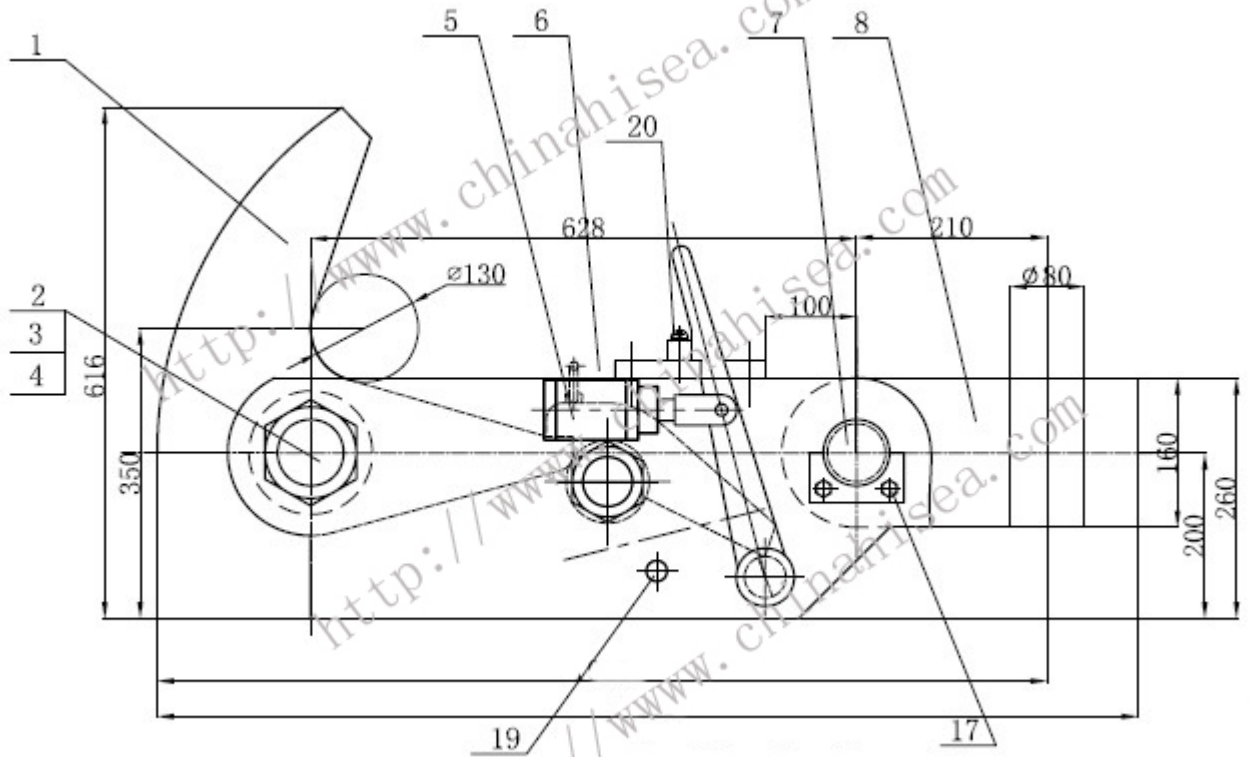
Dia. of Rubber Hose ID:12mm OD:8mm

Offer scope: Towing Hook, Stainless Cylinder, Solenoid Valve, Rubber Hose.

2.Accessories:

FRL Unit Swivel: Standard connecting swivel Gauge: Pressure gauge
 Controls: Local and remote(for wheel house) CAD General Drawing would offer
 Schematic for Electric-Pneumatic Remote Control Attached
 Long economic life of over 20years.

3.Drawing



4.Specification:

S.W.	T.T.L	R.L	W.t	A	B	C	D	E	F	G	H	K	L	M	N	N	P
150	300	150	52	521	571	100	100	150	40	174	316	65	110	50	100	100	150
300	600	300	143	788	868	160	130	225	60	268	461	96	180	80	125	125	207
450	900	450	289	1023	1123	200	160	260	80	350	616	130	210	100	148	148	224
562	1125	562	352	1073	1183	200	290	290	90	350	616	130	250	110	170	170	245
1000	1500	1000	526	1159	1279	230	330	330	100	400	700	150	250	120	212	212	333

5. Certificates: DNV, KR, NK, LR are available at request.