

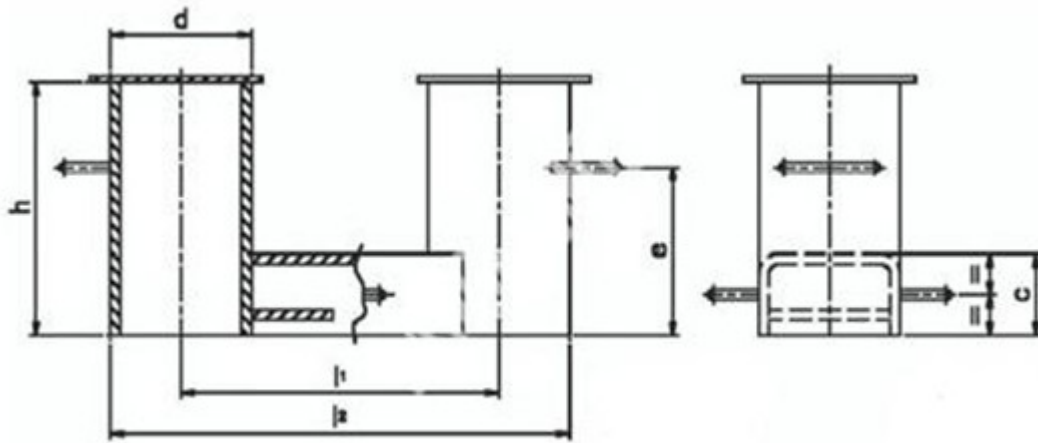
NS2584 Marine double bits:

- 1.material:Cast Steel (JIS G5102), Cast Iron (JIS G5501), Ductile Iron (JIS G5502)
- 2.Bollard Capacity: 10~200 Tonnes
- 3.Certificate: ABS, CCS, etc
- 4.This bollard is custom made to meet your special application.

We designs and manufactuers one of the most comprehensive product lines of cast iron and cast steel marine mooring dock bollards in the world. Our dock bollards come in many popular shapes and sizes to suit most docks, jetties and wharves. We are able to adjust mooring bollards shape, wall thickness, material strength, bolt hole numbers & positions to meet the need of the most demanding applications with the right amount of material,meaning our bollards enjoy a long and trouble free service life.

We also customize bollard products for special requirements.

5.



NS2584 Marine double bits

Type	F		Dimension(mm)						Weig
	M	T	D	C	E	H	L1	L2	
125	4.5	13.2	140	80	165	250	315	455	26
160	5.6	15.8	168	90	195	300	400	568	37
200	10.2	29	219	100	250	400	500	719	75
250	13.2	37.2	273	125	315	500	630	903	124
315	20.9	55	324	150	375	600	800	1124	230
400	28.5	75.4	406	175	435	700	1000	1406	356
500	52	123.6	508	200	515	830	1250	1758	723
630	62.7	158.1	610	225	615	1000	1570	2180	1084
710	83.1	219.3	711	250	675	1100	1750	2461	1532

6.Photo.

