

# Marine & Oil Platform Oily Water Separator



YWC-0.25

YWC-0.5

YWC-1.50

YWC-2.50

YWC-1.00

YWC-2.00

**Chongqing Hi-sea Marine Equipment Import & Export Co., Ltd**

**Tel: +86-23-67868283**

**Fax: +86-23-67956622**



## 1. Application:

This device can be used to treat oily bilge water in order to make it reach the requirements of **IMO.MEPC.107 (49)** resolution, which is also called 15ppm bilge separator. **It contains type approved 15ppm bilge water separator, 15ppm bilge alarm and automatic shut down Device.**

## 2. Principle:

The device adopts the combination of 1<sup>st</sup> stage, cone plate gravity and coalesce separation; 2<sup>nd</sup> stage, fiber filter and 3<sup>rd</sup> stage, membrane permeation in order to make the treated bilge water to reach the requirements of discharge standard of the resolution of IMO MEPC.107 (49).

As shown in the enclosed drawing, bilge water comes into the 1<sup>st</sup> stage coalesce separator because of the suction of the **Feeding** pump, that is in a vacuum negative pressure, and it effectively prevents the problem that the bilge water is difficult to be separated because of the emulsion caused by feed pump under pressure. The liquid coming out of **Feeding** pump is adsorbed and filtered by the 2<sup>nd</sup> stage fiber filter, and then goes into the 3<sup>rd</sup> stage membrane **to reach the discharge standard.**

There is a 15ppm bilge alarm in the ship cabin to measure the oil content of effluent. If it finds that the oil content of effluent is in an excess of limit, the oil content meter can make order to switch turn it into the 3<sup>rd</sup> stage, membrane treatment process.

The oil content meter will give an alarm if finds the oil content of effluent is above limit, and the unqualified water pneumatic **three-way** valve **VS6** is opened automatically, so that the unqualified water is return to bilge, not to the overboard.



**15pp Bilge Alarm**

### 3. Technical Specifications:

Type		YWC-								
		0.25	0.50	1.00	1.50	2.00	2.50	3.00	4.00	5.00
Technical Specifications										
Rated capacity (m <sup>3</sup> /h)		0.25	0.50	1.00	1.50	2.00	2.50	3.00	4.00	5.00
Oil content of the discharged water		≤15ppm								
Power of the electric heater (kw)		3	3	6	6	6	6	6	12	12
Electrical System		AC 380V/50Hz/3φ, AC 415V/50Hz/3φ, AC 440/60Hz/3φ, AC 480V/60HZ/3φ (optional)								
Power of the electric motor		0.37kw	0.55kw	0.75kw	1.1kw	1.1kw	1.5kw	1.5kw	2.2kw	2.2kw
Suction head		≤6m-H <sub>2</sub> O								
Pressure of the discharged water		5-10m-H <sub>2</sub> O								
Outline Dimension (L×W×H) (mm)		1000×600×1250	1100×690×1460	1050×1000×1620	1100×1130×1650	1900×1120×1700	1900×1120×1900	1700×1500×1900	2280×1700×1900	2590×2000×1900
base		5#	6#	6#	6#	8#	8#	8#	10#	10#
Weight	Dry Weight	400	600	800	1060	1260	1500	1800	2100	2500
	Wet Weight	550	900	1200	1650	2260	2800	3200	3900	4600
Applicable Vessel (KDWT)		<1	1-5	5-10	10-30	30-50	50-100	100-200	100-300	>300

#### 4. Certificate:

CCS, BV, EC, GL, ABS, LR class, etc.



#### 5. Warning

To comply with resolution IMO MEPC.107 (49), on board, especially ocean-going ships, they must be installed on board: 15ppm bilge separator, 15ppm bilge alarm and automatic stopping device. The elementary diagram as follow:

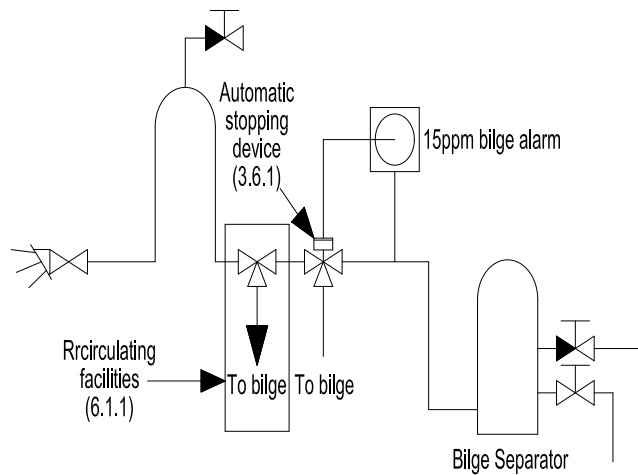


Figure 1

### 13. Contact us

**If you cannot find the information you are looking for, please contact us.**

CHONGQING HI-SEA MARINE EQUIPMENT IMPORT & EXPORT CO., LTD

ADD: F20-5, General Chamber of Commerce Building, No.2 Hongjin Street,  
Yubei District, Chongqing, China, 401147

E-mail: [sales7@hiseamarine.com](mailto:sales7@hiseamarine.com)

Skype: skeeterdeng

Tel: +86-23-67686362

Fax: +86-23-67956622

[www.chinahisea.com](http://www.chinahisea.com)