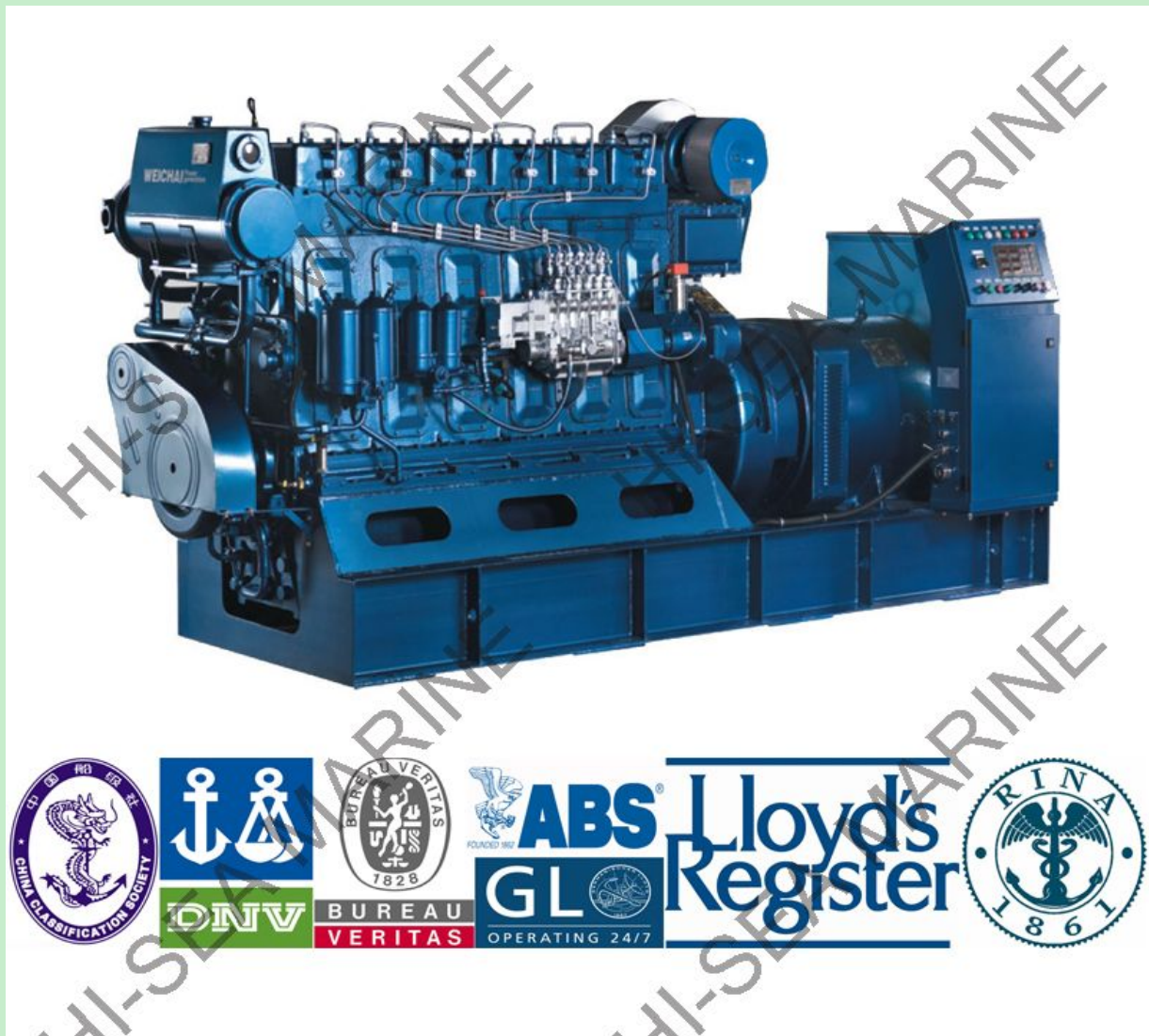


WEICHAI marine diesel genset

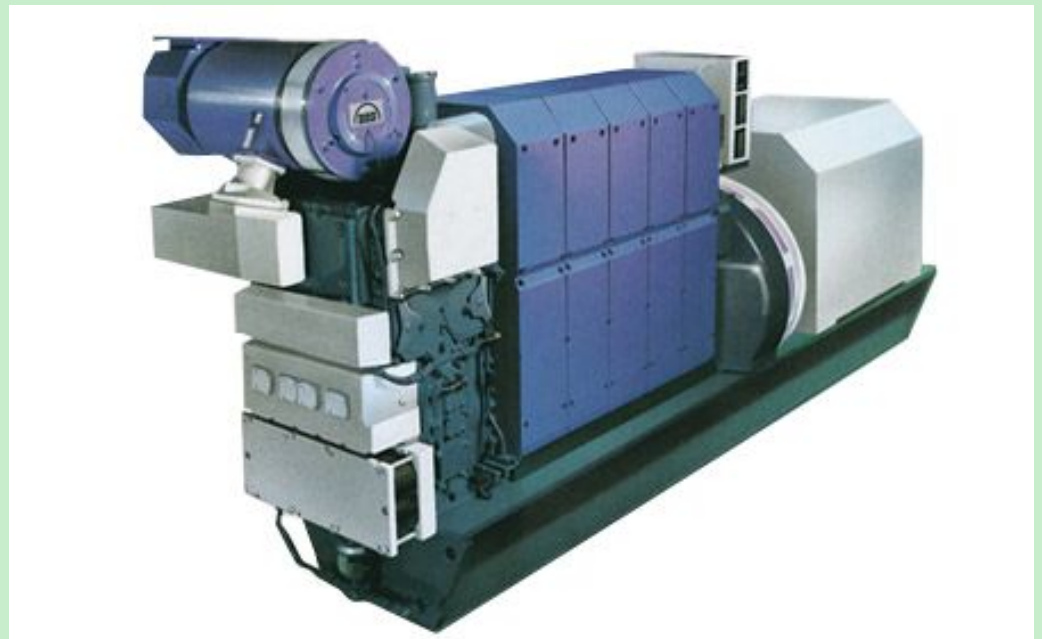


WEICHAI marine diesel genset features:

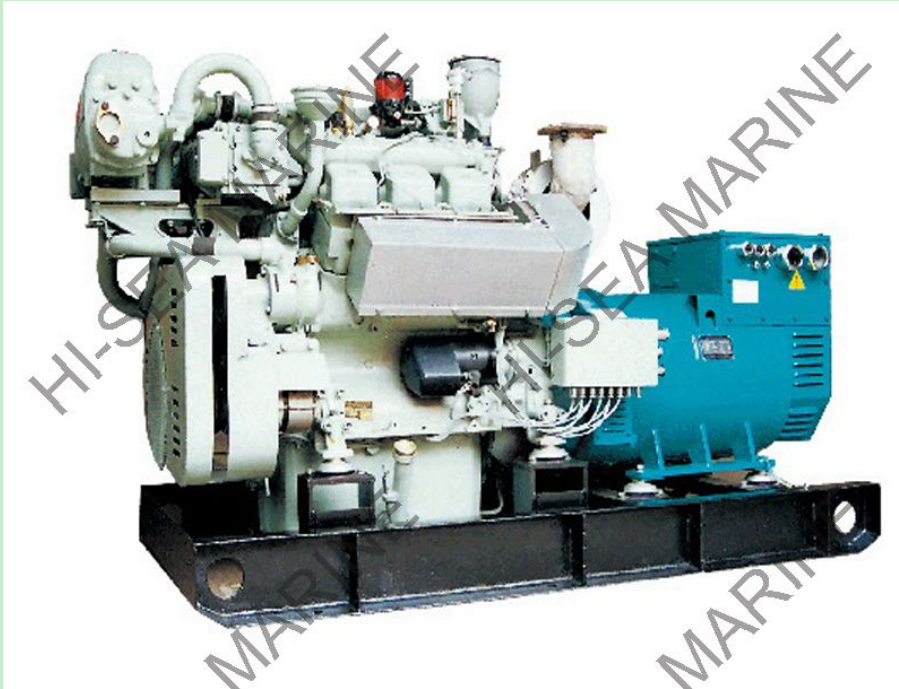
1. The output power range of WEICHAI marine genset is from 30kw-1500kw.
2. Speed: 1500rpm/1800rpm, Frequency: 50hz/60hz.
3. Match with famous brand alternators: Siemens, Stamford, Marathon, SUNVIM, Leroy-somer.
4. Small size, light weight, low noise, low fuel consumption and high power.
5. WEICHAI marine gensets have the character of high speed-regulating accuracy, better dynamic state performance and high efficiency.
6. WEICHAI marine genset and emergency marine genset can be used as main power or stand-by emergency power for all kinds of vessel.
7. Certificate: CCS, BV, ABS, GL, RS, CE, NK, KR.

Technical Specifications

Model	Power kW	Model of diesel engine	Power of diesel engine kW	Intake mode	LxWxH mm			Weight kg
CCFJ150J-WI	150	WD615.68CD	170	Turbocharged and intercooled	2500	1004	1387	2180
CCFJ180J-WI	180	WD615.46CD	204	Turbocharged and intercooled	2543	1016	1618	2260
CCFJ200J-WI	200/1500	WD618.42CD	235	Turbocharged and intercooled	2540	991	1642	2500
CCFJ220J-WI	220/1500	WD618.42CD	255	Turbocharged and intercooled	2670	991	1642	2500
CCFJ240J-WI	240/1800	WD618.42CD	270	Turbocharged and intercooled	2670	991	1642	2500
CCFJ250J-WI	250/1500	WP12CD290E201	290	Turbocharged and intercooled	2710	1108	1340	2500
CCFJ260J-WI	260/1500	WP12CD290E201	290	Turbocharged and intercooled	2710	1108	1351	2500
CCFJ280J-WI	280/1500	WP13CD385E200	350	Turbocharged and intercooled	2838	1134	1353	2500
CCFJ300J-WI	300/1500	WP13CD385E200	350	Turbocharged and intercooled	2838	1134	1353	2500



1500kw WEICHAI marine diesel genset



300kw WEICHAH marine diesel genset



emergency WEICHAH marine diesel genset

Chongqing Hi-Sea Marine Equipment Import&Export Co.,Ltd.

Address: 20-5,General Chamber of Commerce Building, No.2 Hongjin Street, Yubei District, Chongqing, China

Email: machine@hiseamarine.com mitang0708@foxmail.com **Skype:** cncqtang **QQ:** 2278612160

TEL: +86-23-67032301 **FAX:** +86-23-67955123 **Mobile:** +86-18108354610 **Post Code:**401147

Website: www.hiseamarine.com www.chinahisea.com