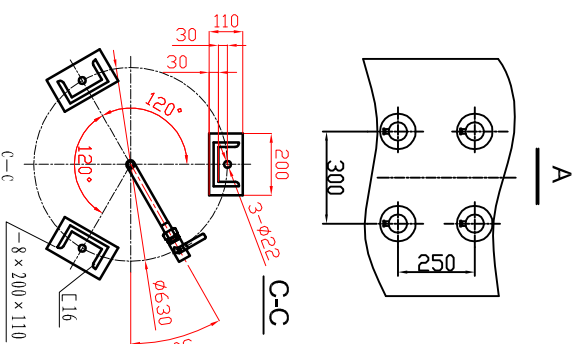


Galvanization steel plate

Specification

- Main parameter
Volume : 1.0m³ ;
Design pressure : 0.7MPa;
Working pressure : 0.5MPa;
Electric heating power : 2*12+2*18kw;
Power source : 3φ 480V 60Hz;
Whole pressure testing: 1.05MPa;
- Main body structural testing: 0.875MPa Does not have the leakage ;
- The superficial stain removal,
The ontology of galvanized processing ;
- With ANSI B 16.5 RF# 150 flange



15	1. SCWX-2	Circulating pump	2	Assembly	3m ³ /h 0.5mpa 3kw
14	B16040 GFR 591	Stop inverted valve	2	Assembly	
13	RYF 480V/12kw	Electric heater	2	Assembly	
12	RYF 480V/18kw	Electric heater	2	Assembly	
11	IQK-01	Fluid position controller	1	Assembly	Matches the sensor
10		Temperature controller	1	Assembly	
9		Electricity controller	1	Assembly	
8	A21F-16P	Safety valve	1	Assembly	
7		Name plate	1	Stainless	
6	YC-100T	Pressure gauge	1	Assembly	
5		Pressure gauge connection	1	Assembly	
4	WSS-401	Thermometer	1	Assembly	
3		Main body 88	1	Assembly	
2		Manhole cover DN400	1	Assembly	
1	DN20	ball valve	1	Stainless	
	No Code number	Name	Quantity	Material	Annotation
		Electric heating		DRG-1.0	
		hot water tank		Mark	Weight (Kg) Proportion

General layout

Mark	Structure	DRG-1.0
Proportion	1:1	
Material	Stainless	
Page	1	
Page	1	
Page	1	