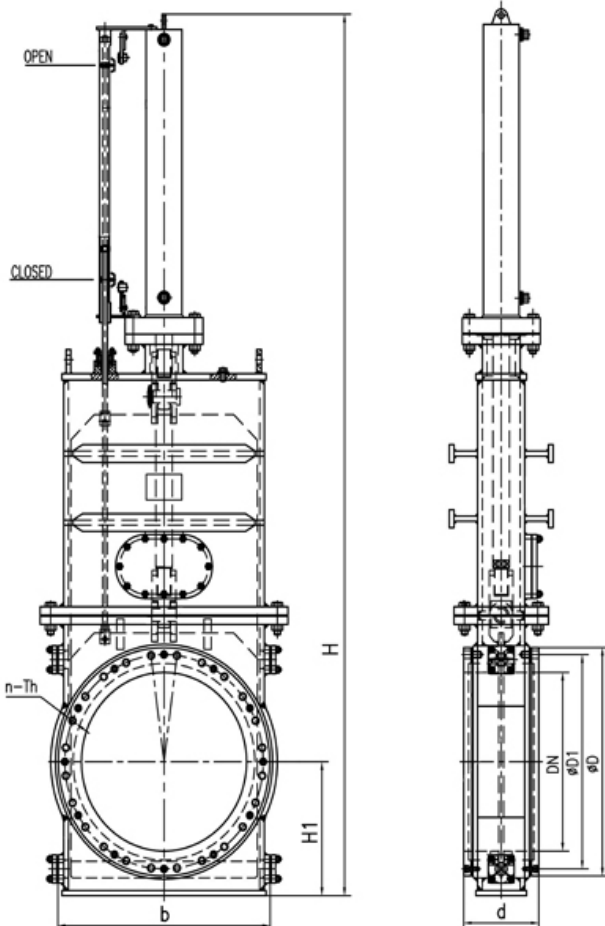
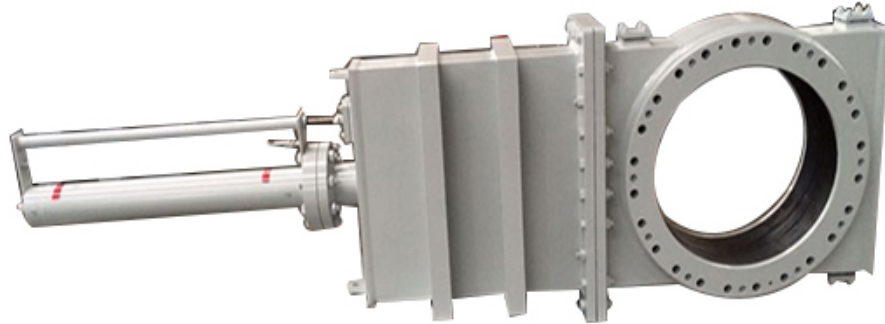


Hydraulically Dredge Gate Valve



Hydraulically Gate Valve main features:

- 1.The gate valves are designed to cope with highly abrasive slurries and to open and close smoothly in severe operational environments.
- 2.A polished knife gate is installed,made out of stainless steel.
- 3.Reinforced rubber ring seals are installed for a perfect seal. The rubber seal provides an efficient and free passage of slurry mixture in the pipeline when the slide is open.
- 4.The gate valves are designed to be maintenance friendly.
- 5.The gate valves are equipped with electric open/closed sensors.
- 6.Special dimensional requirements such as mounting dimensions of the gate valve can be met upon request.
- 7.The proven design and technology are widely used in the dredging industry.

Technical specifications

Nominal Diameter	Structure size				Flange connection			Working pressure
	DN(mm)	H(mm)	H1(mm)	D(mm)	B(mm)	D(mm)	D1(mm)	
450	2290	382	230	620	615	565	16-M24	1.6
500	2595	434	258	680	670	620	20-M24	1.6
550	2740	456	258	730	730	675	20-M24	1.6
600	2950	496	278	780	780	725	20-M27	1.6
650	3190	526	278	830	835	780	24-M27	1.6
800	3775	625	346	1010	1015	950	24-M30	1.6
1000	4615	775	434	1250	1230	1160	28-M33	1.6
1400	6045	965	478	1650	1675	1590	36-M42	1.6
450	2260	405	387	620	670	600	16-M27	2.5
650	3075	525	487	830	895	820	20-M33	2.5
850	3855	660	598	1060	1130	1040	24-M36	2.5
1000	4810	800	748	1250	1295	1210	28-M42	2.5
1100	5135	840	748	1350	1420	1320	32-M42	2.5
1200	5250	880	819	1450	1530	1420	32-M42	2.5
1300	5735	965	819	1550	1645	1530	36-M42	2.5
1400	6075	1025	819	1650	1755	1640	36-M48	2.5

NOTE: All dimensions are indicative values only. We can supply the Gate Valves according to your requirements.



Hydraulically Dredge Gate Valve in factory

Chongqing Hi-Sea Marine Equipment Import&Export Co.,Ltd.

Address: 20-5,General Chamber of Commerce Building, No.2 Hongjin Street, Yubei District, Chongqing, China

Email: machine@hiseamarine.com mitang0708@foxmail.com **Skype:** cncqtang **QQ:** 2278612160

TEL: +86-23-67032301 **FAX:**+86-23-67955123 **Mobile:** +86-18108354610 **Post Code:**401147

Website: www.hiseamarine.com www.chinahisea.com